

Rates

Table with columns: Instrumento, TNA, Date. Rows include Cautión 7d, Cautión 30d, BADLAR Priv. (>\$1mm), TAM20 Priv. (>\$20mm), TPM - Leliq 7D.

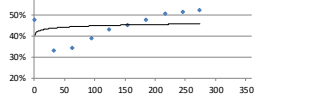
BCRAA3500 USD

Table with columns: Days, Change, Annualized. Rows include 8d, 30d, 62d, 90d, 182d, 366d.

Rofax - ARS/USD Futures

Table with columns: Futures, Maturity, Days, USD, Rates, -d1, Ch, Op. I. Rows include SPOT, DLR052020, DLR062020, etc.

Rofax Futures implicit rates



ARS - USD

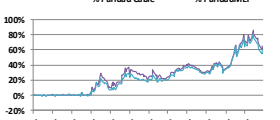
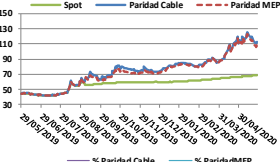


Table with columns: \$, %. Rows include Spot, Paridad Cable, Paridad MEP.

Bonds

Table with columns: Bond, Code, Amt.Out., Coupon, Price, YTM, MD, Maturity. Rows include Sovereign Bond Inflation Indexed, Boncer 04-21, etc.

Table with columns: Bond, Code, Amt.Out., Coupon, Price, YTM, MD, Maturity. Rows include Sovereign and corporate ARS Floating Monetary Policy, Bonte TFM 20, etc.

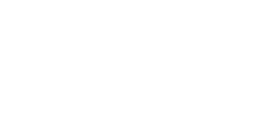
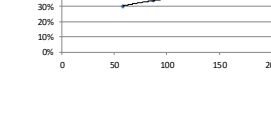
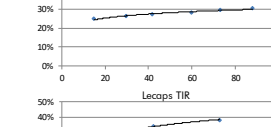
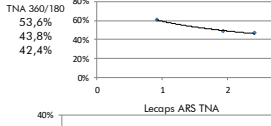
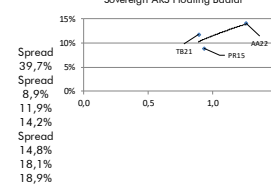
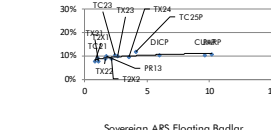
Table with columns: Bond, Code, Amt.Out., Coupon, Price, YTM, MD, Maturity. Rows include Dual Linked, Grilo AF20, etc.

Table with columns: Bond, Code, Amt.Out., Coupon, Price, YTM, MD, Maturity. Rows include Ledes ARS, S1610, S0110, etc.

Table with columns: Bond, Code, Amt.Out., Coupon, Price, YTM, MD, Maturity. Rows include Sovereign ARS Floating Badlar, Lecaps ARS, S30A0, etc.

Table with columns: Bond, Code, Amt.Out., Coupon, Price, YTM, MD, Maturity. Rows include Sovereign ARS Fixed, Ledabs ARS, S2210, etc.

Table with columns: Bond, Code, Amt.Out., Coupon, Price, YTM, MD, Maturity. Rows include Sovereign ARS Fixed, Ledabs ARS, S2210, etc.



Bonds

Table with columns: Bond, Code, Amt.Out., Coupon, Price\*, YTM, MD, Maturity. Rows include Sovereign ext. law USD (1), Bonos Int.21 NYL, etc.

Table with columns: Bond, Code, Amt.Out., Coupon, Price\*, YTM, MD, Maturity. Rows include Sovereign Arg. law USD (1), Bonor 24, etc.

Table with columns: Bond, Code, Amt.Out., Coupon, Price\*, YTM, MD, Maturity. Rows include Sub-Sovereign USD (8), Bs. As. 21 NYL, etc.

Table with columns: Bond, Code, Amt.Out., Coupon, Price\*, YTM, MD, Maturity. Rows include Corporate USD\*, Pan Am 2021, etc.

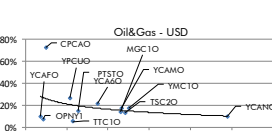
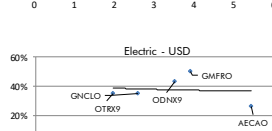
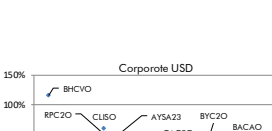
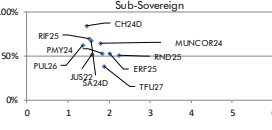
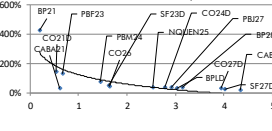
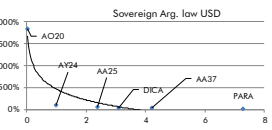
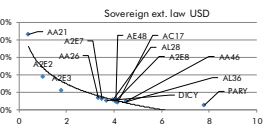
Table with columns: Bond, Code, Amt.Out., Coupon, Price\*, YTM, MD, Maturity. Rows include Corporate USD\*, Pan Am 2021, etc.

Table with columns: Bond, Code, Amt.Out., Coupon, Price\*, YTM, MD, Maturity. Rows include Corporate USD\*, Pan Am 2021, etc.

Table with columns: Bond, Code, Amt.Out., Coupon, Price\*, YTM, MD, Maturity. Rows include Corporate USD\*, Pan Am 2021, etc.

Table with columns: Bond, Code, Amt.Out., Coupon, Price\*, YTM, MD, Maturity. Rows include Corporate USD\*, Pan Am 2021, etc.

Table with columns: Bond, Code, Amt.Out., Coupon, Price\*, YTM, MD, Maturity. Rows include Corporate USD\*, Pan Am 2021, etc.



El presente documento ha sido realizado por Argenfund S.A. con fines estrictamente informativos. No debe ser tomado como una invitación a suscribir cutopatantes ni como una oferta de compra o venta de valores. El documento se ha realizado con fuentes de información consideradas confiables, pero la empresa no puede garantizar la exactitud de las mismas. Los fondos comunes de inversión están sometidos a variaciones en los precios de los activos que pueden afectar su rendimiento. Los rendimientos pasados de los fondos comunes de inversión no garantizan el desempeño futuro de los mismos. Las inversiones en cutopatantes del Fondo no constituyen depósitos en Banco Macro S.A. a los fines de la Ley de Entidades Financieras ni cuentan con ninguna de las garantías que tales depósitos a la vista o a plazo pueden gozar de acuerdo con la legislación y reglamentación aplicables en materia de depósitos en entidades financieras. Asimismo, Banco Macro S.A. se encuentra impedida por normas del Banco Central de la República Argentina de asumir, tácita o expresamente, compromiso alguno en cuanto al mantenimiento, en cualquier momento, del valor del capital invertido, al rendimiento, al valor del rescate de la cuota partes o al otorgamiento de liquidez a tal fin. Gráficos de Elaboración propia. Fuentes Rofax CAFCI y Bolsar